

# Who is CAMLT?

The **California Association for Medical Laboratory Technology** is a voluntary, not-for-profit professional organization representing dedicated laboratory professionals, such as the Clinical Laboratory Scientist, the Medical Laboratory Technician and the Certified Phlebotomy Technician, throughout the State of California.

CAMLT works to maintain and improve high quality in laboratory testing by fostering education, networking and working to ensure that legislators understand the impact of new bills in maintaining high quality laboratory results.

The mission of CAMLT is to advance professional growth and development of Clinical Laboratory Scientists, Medical Laboratory Technicians, Phlebotomists and other dedicated laboratory professionals through quality educational programs, legislative representation and member services.

**California Association for  
Medical Laboratory  
Technology**

39656 Mission Blvd.  
Fremont, California 94539  
Tel: 510-792-4441  
Fax: 510-792-3045

Email: [office@camlt.org](mailto:office@camlt.org)  
Website: [www.camlt.org](http://www.camlt.org)

## Career Opportunities

Exciting and diverse career opportunities with very attractive salaries for clinical laboratory personnel include employment in:

- Hospital, independent, reference, and physician office clinical laboratories
- Research—develop and test new methods
- Public Health
  - State health laboratories
  - Community health projects
  - Environmental testing
  - Peace Corps
- Specialty Laboratories
  - Forensics
  - Fertility
  - Veterinary
  - Industrial
- Biotechnology
  - Product research/development
  - Data analysis/bioinformatics
  - Quality assurance
- Sales and Marketing
  - Biomedical supply
  - Technical assistance
  - Pharmaceutical companies
- Laboratory Information Systems
- Education
- Compliance Inspector
  - State and Federal government
  - Accreditation agencies

**California Association for  
Medical Laboratory  
Technology**



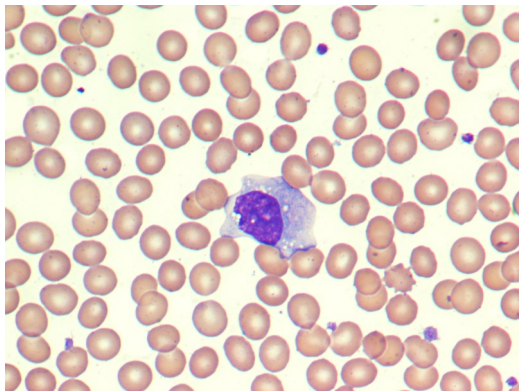
### Laboratory Medicine:

Aid in the diagnosis and treatment of disease and the assessment of general health

### Careers for Today and Tomorrow



## What's a Laboratory Test?



Laboratory tests take human biological samples such as whole blood, urine, spinal fluid and other body fluids and perform various analytical processes to discover specific chemical or cellular attributes as requested by physicians.

Laboratory tests are used by physicians, and other healthcare practitioners, to direct patient care.

Over 80% of clinical and diagnostic decisions are based on the results of laboratory testing.

Laboratory Tests are classified as waived, moderate, or high complexity based on the necessary skill and educational level of the testing personnel needed to perform a particular test.

## Who Works In a Laboratory?

**Pathologists**—physicians who specialize in Clinical/Anatomic Pathology including tissue analysis and cytological testing such as the interpretation of PAP smears and the identification of malignant cells. They are responsible for the overall operation and administration of clinical laboratories.

**Clinical Lab Bioanalyst**—CLB have, at the minimum, a master's degree and meet the education and training requirements of the clinical laboratory scientist (CLS). Their scope of practice includes all the activities of the CLS. In addition, the CLB may direct waived, moderate and high complexity laboratories.

**Clinical Lab Scientists**—CLS have, at the minimum, a bachelor's degree and have completed a post-graduate training program in a DPH (Dept of Public Health) approved laboratory. After passing a licensure examination, they perform waived, moderate and high complexity laboratory testing, including analyzing body fluids, cells, and tissue samples. A CLS must maintain instruments to assure the highest level of accuracy. They supervise unlicensed staff, phlebotomists and MLT. The CLS manages daily activities, direct quality assurance, finances, and technological improvements in the laboratory. In addition, the CLS may direct waived laboratories.

**Medical Lab Technicians** – MLT, newly licensed in California, these people have at least an Associate's degree plus hands on training in a DPH approved laboratory, and perform waived or moderate complexity testing (except microscopy or in the specialty of immuno-hematology).

**Certified Phlebotomy Technicians**—CPT have at least a high school education and are certified to draw blood and process specimens, but are not licensed to perform or report laboratory test results. They play an important role in the pre-analytical phase of testing (collection and preparation the specimen).

